

BRO

BRO New Generation U Pro series

Agriculture Drone



Foldable Arm



FPV Gimbal



Weight Sensor



Integrated FC



Waterproof and Dustproof



Large-flow Impeller Pump

New generation U Pro series agriculture drone will bring you wonderful experience.

New designed truss- style structure with foldable arms to reduce the body size,
compatible with spraying and spreading functions.

Equipped with Bro Mini Ultra-wide Angle FPV gimbal,which makes operator has a wide
vision on the field and drone mapping more flexible and convenient.

U40,U60 can meet different scenarios operation needs.



U60



U40



Folded arms for convenient carry and transportation.



High strength structure greatly reduce the maintenance cost.



Highly integrated flight controller achieve perfectly
software and hardware integration



Weight sensor real-time remaining pesticide monitoring



Water-cooling centrifugal nozzles stronger penetration and smaller atomized articles



Pluggable and integrated spraying tank can quickly be swapped with spreading tank



MECHANICAL LOCK

Special innovative mechanical lock, avoid the accident caused by unlocking

LOCK SENSOR

Dual protection, no locking, no flying



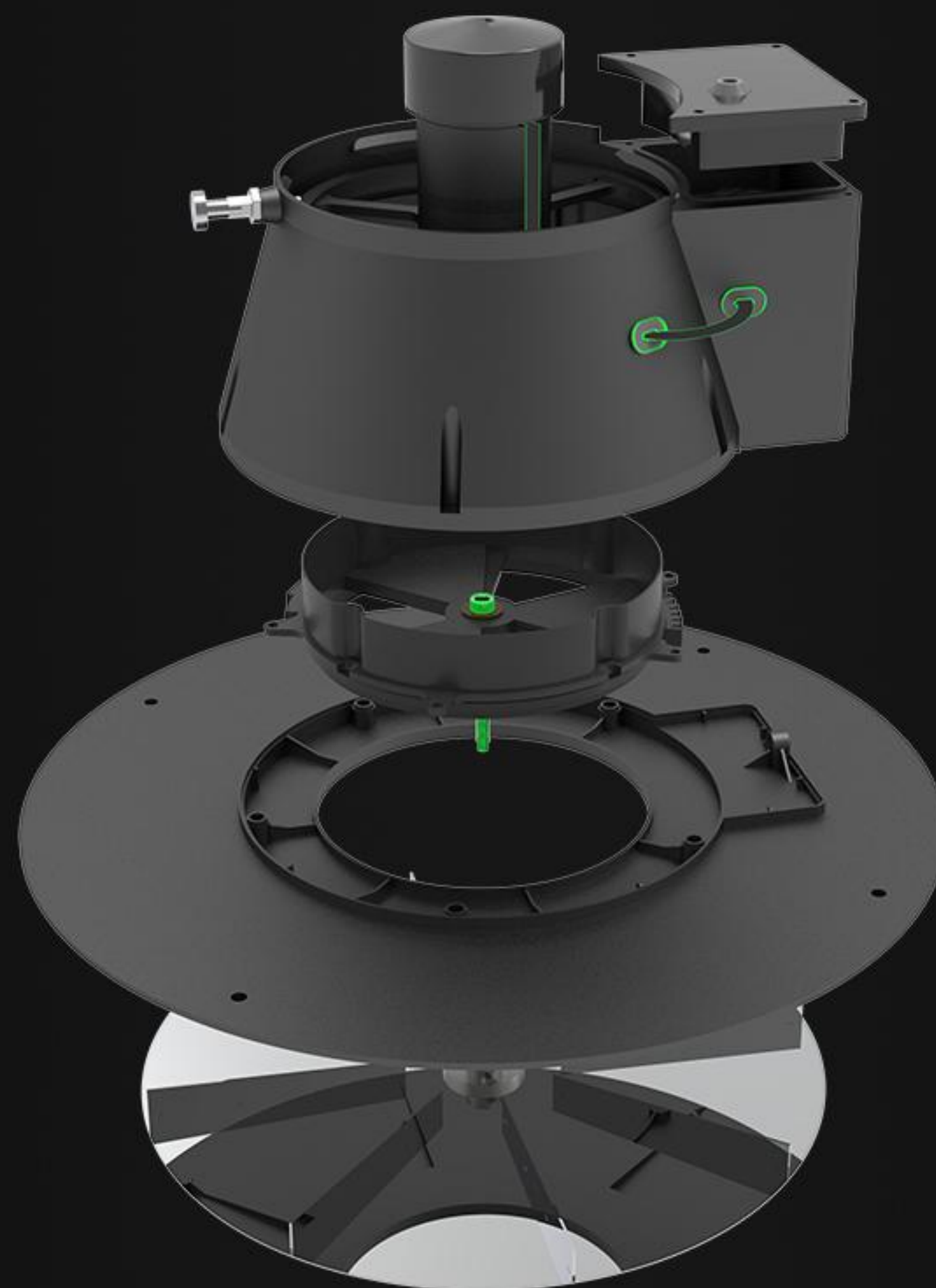
1080P FULL HD STARLIGHT FPV

Bro mini FPV gimbal's ultra-sensitive starlight CMOS can keep image bright even in low light environment.



U40 and U60 can both spray pesticide and spread solid fertilizer or seeds.

The all-new integrated spraying system can quickly be swapped with spreading system. The spreading tank capacity of U40 and U60 are 50L and 70L.



The new version spreader adopts upper and lower segmented drive shaft design.

Screws are screwed externally, so won't stick fertilizers and can be easily disassembled and assembled from outside. The motor wiring is external to prevent fertilizers and liquids from entering the electric control hatch



FUNCTION



AB point memory operation



Data Cloud Storage



Field Planning



Obstacle avoidance radar



Real-time Battery Monitoring



Night Navigation Function



Aircraft Breakpoint Memory



Empty tank warning



Manual Operation Mode



Position Retention Mode



Terrain Following Radar



Carbon Fiber Arm



Excellent Battery Life



HD Fpv Camera



High-precision GPS system



IP67 Rating for Core Modules



SPECIFICATIONS

| | | U40 | U60 |
|------------------------------|---|--|--|
| Airframe | Airframe Dimensions (incl.propellers)(mm) | 2560mm*2460mm*790mm | 3060mm*3050mm*840mm |
| | Transport Dimensions (mm) | 940mm*715mm*810mm | 1110mm*800mm*865mm |
| | Max Takeoff Weight (kg) | 90 | 110 |
| | Water-resistant | IP67 | IP67 |
| Flight Control System | Flight Controller | High Integrated Agriculture Intelligent System | High Integrated Agriculture Intelligent System |
| | Night Operation | ✓ | ✓ |
| | Obstacle Avoidance | ✓ | ✓ |
| | MMW Radar Terrain Tracing | ✓ | ✓ |
| | Terrain Tracing Accuracy (m) | ≤ 0.5 | ≤ 0.5 |
| | Navigation Method | Dual RTK module system+GPS | Dual RTK module system+GPS |
| | Spraying System | Maximum Capacity (kg) | 30 |
| Spraying Tank(L) | | 30 | 50 |
| Spreading Tank(L) | | 50 | 70 |
| Spraying Width (m) | | 6-10 | 8-12 |
| Efficiency (ha/mission) | | 2 | 3.3 |
| Nozzle Type | | Centrifugal Nozzles | Centrifugal Nozzles |
| Droplet Size(μm) | | 50-500μm | 50-500μm |
| Breakpoint Resume | | ✓ | ✓ |
| Instant Flow-start/stop | | ✓ | ✓ |
| Operating Efficiency [ha/hr] | | 12 | 20 |
| Flowmeter/level Gauge | | ✓ | ✓ |
| Power System | | Battery Capacity (mAh) | 14S 30000*1 |
| | Battery Warranty (Cycle) | 1 Year or 1000 cycles | 1 Year or 1000 cycles |
| | Charging Time(min.) | 10 | 10 |
| Remote Control System | Integrated Intelligent Remote Controller | ✓ | ✓ |
| | Charger | . | . |
| | FPV | 1080P Single Axis Gimble | 1080P Single Axis Gimble |



REMOTE CONTROLLER

BROUAV integrated intelligent remote controller-Z14,high resolution and ultra bright 5.5 inch screen,visible even under strong sunlight.

Adopts newest Qualcomm Snapdragon 625 processor, equipped with an Android embedded system and advanced SDR technology and super protocol stack, making the image clearer, lower the latency, longer distance, stronger anti-interference.

Internal rechargeable battery,long lasting,support charging and working simultaneously.

Ultra long distance transmission, control radius over 5Km.

IP67 protection capability,dust proof, anti-splash.





SMART LITHIUM BATTERY

BRO smart lithium battery uses high energy cells and an advanced power management system to provide long-lasting power to BRO U series drone. The optimized battery cells and heat dissipation design effectively keep the temperature of the battery in check.

BRO intelligent charger supports single phase and three phase AC power input. Three phase AC input is the fast charging model, which can charge the relative battery fully in 10~15 minutes. Additionally, the charger includes overcurrent protection, overcharging protection, under-voltage protection, overheating protection, and status display.



✓ Large Capacity

✓ Fast Charging


✓ Overcharging Protection

✓ Overcurrent Protection

✓ Over Voltage Protection


✓ Short Circuit Protection


BRO


 Website : www.bro-uav.com
www.brouav.com

 Email : sales@brouav.com

 Facebook : BROUAV

 Youtube : BROUAV Official

 Call us : 008615689996729

 WhatsApp : 008615689996729